

Example Front Elevations



Cottage Flat Types

All cottage flat and house types are designed to comply with Housing for varying needs, the Glasgow Standard, and Scottish Building Standards Technical Handbook (domestic).

The **Glasgow Standard** builds on the principles of **HFVN** and meeting this standard is a requirement of all projects funded by the Affordable Housing Supply Programme in Glasgow. The requirements are set out in a bid to create homes which are; high quality, safe and secure, sustainable, meet changing family needs, have adequate storage space and are wheelchair adaptable

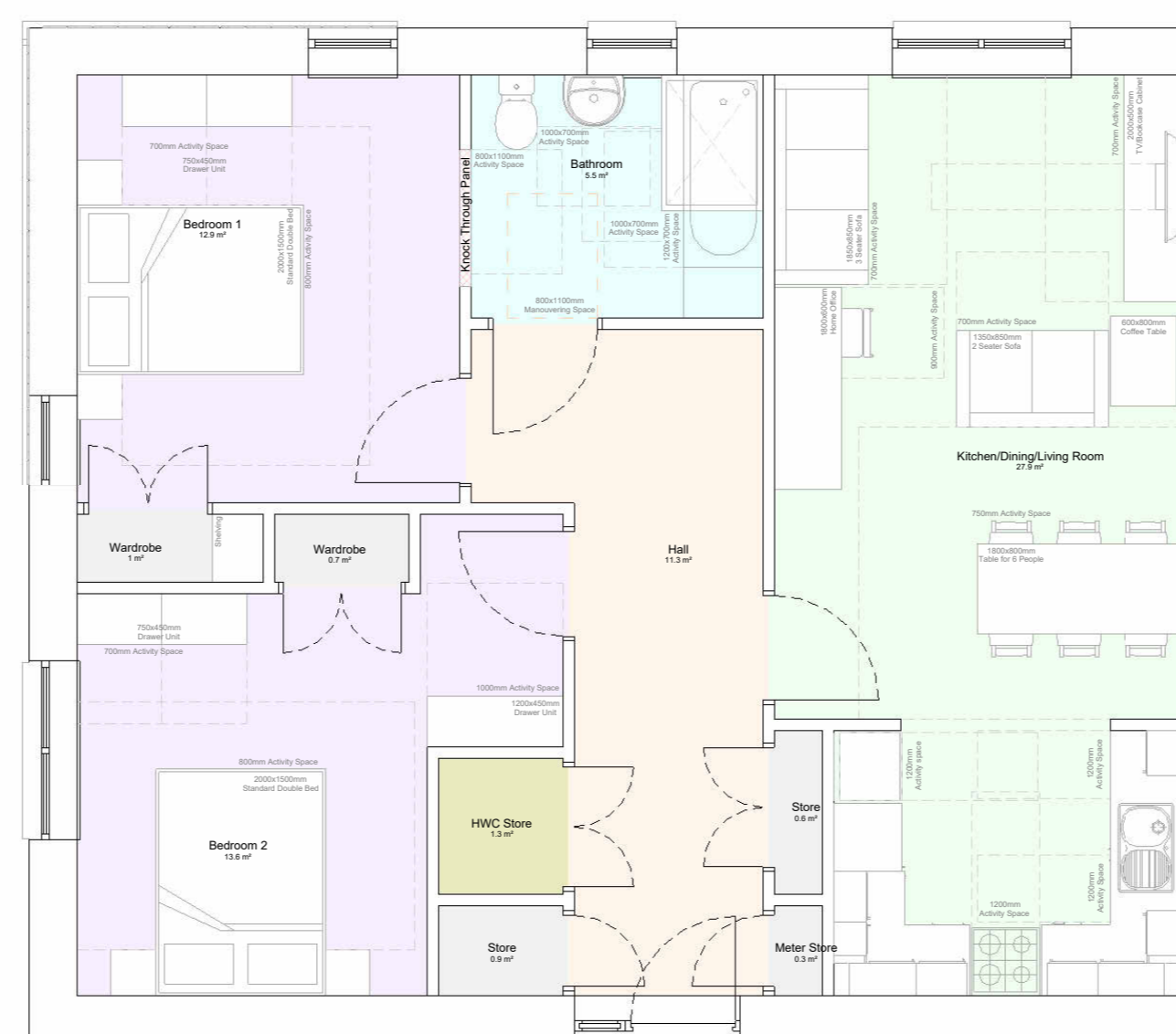
In order to achieve these aims the following principles should be incorporated in the design of both development layouts and house types;

- Good quality design which provides physical, functional, social and environmental value as well as viability in terms of value for money.
- Ample, easily accessible and useable storage.
- Enhanced space standards, which meet minimum requirements for both overall dwelling and individual room types.
- Flexibility in living room and bedroom layouts which accommodate all notional furniture.
- High sustainability standards which meet one of the three levels of sustainability outlined within the standard - Gold Hybrid, Nearly Zero Emissions or Net Zero.
- Sustainable transport provided through cycle parking and EV charging point provision.
- Minimum 10% wheelchair adaptable provision that meet the specific design requirements set out within the standard.

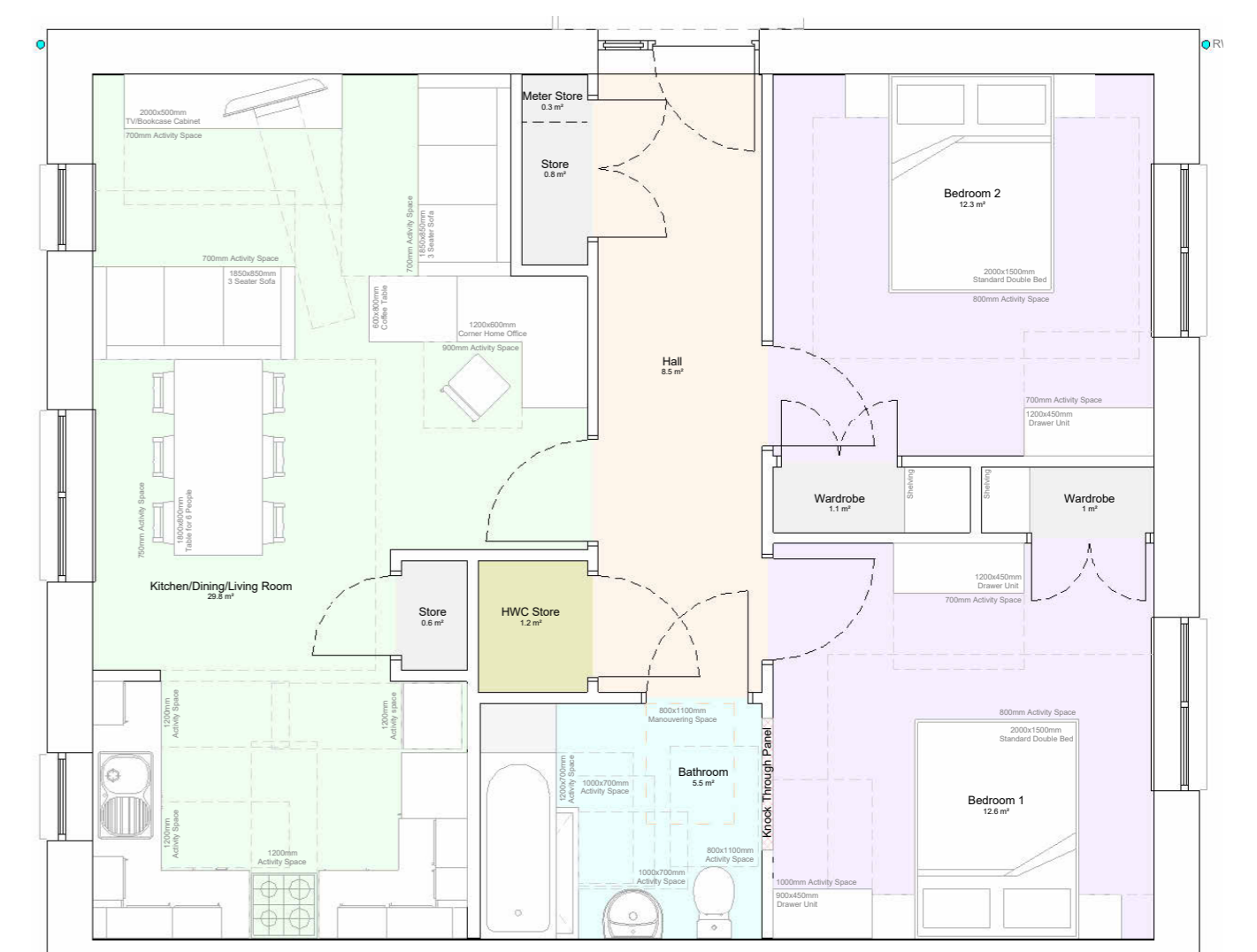
As well as meeting the Glasgow Standard all dwellings must be designed as barrier free which is defined as housing and its environment that is designed to allow for the needs of almost everyone.

This includes:

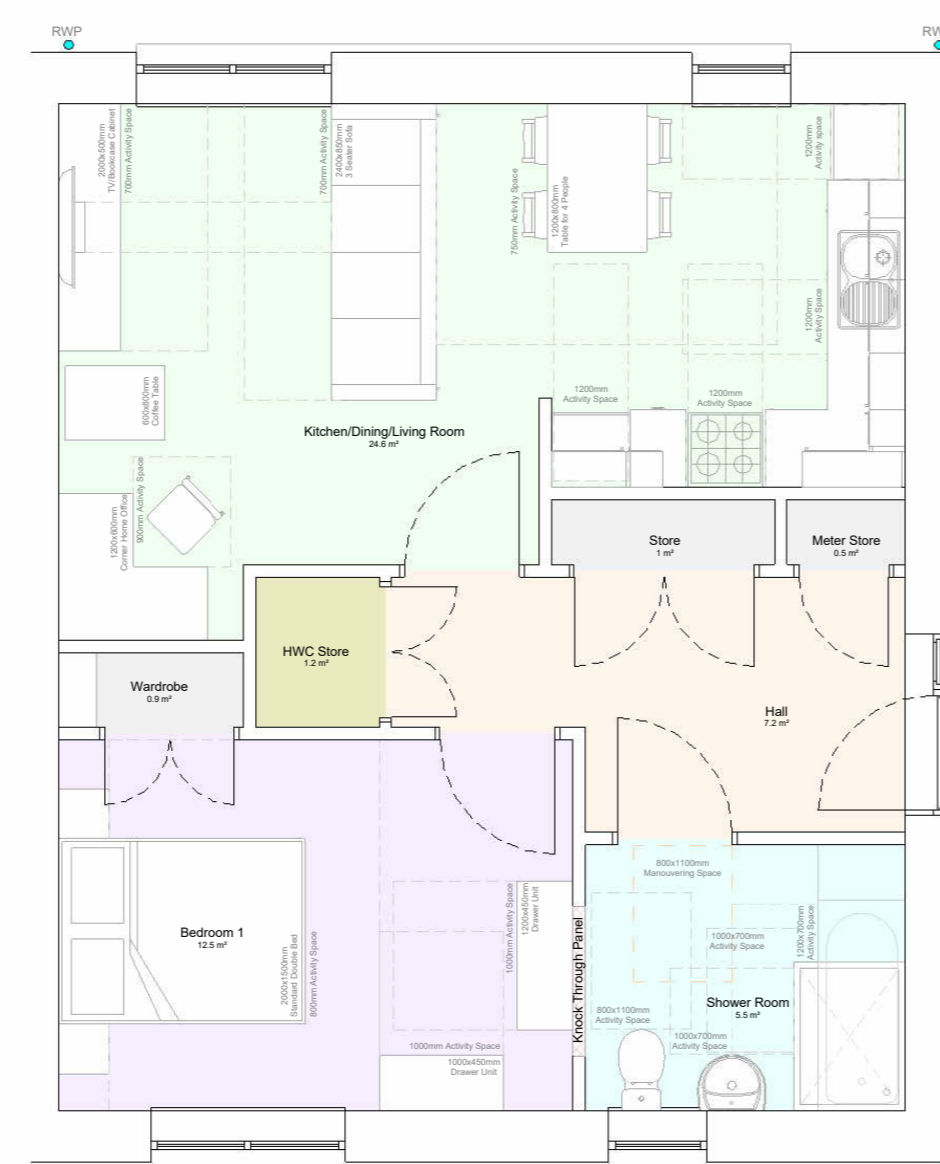
- People with temporary or permanent impaired mobility due to accident, illness or old age and who may use a wheelchair for some of the time;
- People who have difficulty with steps, bending down or reaching or who lack dexterity;
- People with impaired sight or hearing;
- People with impaired memory, learning or reasoning;
- People pushing and manoeuvring prams.



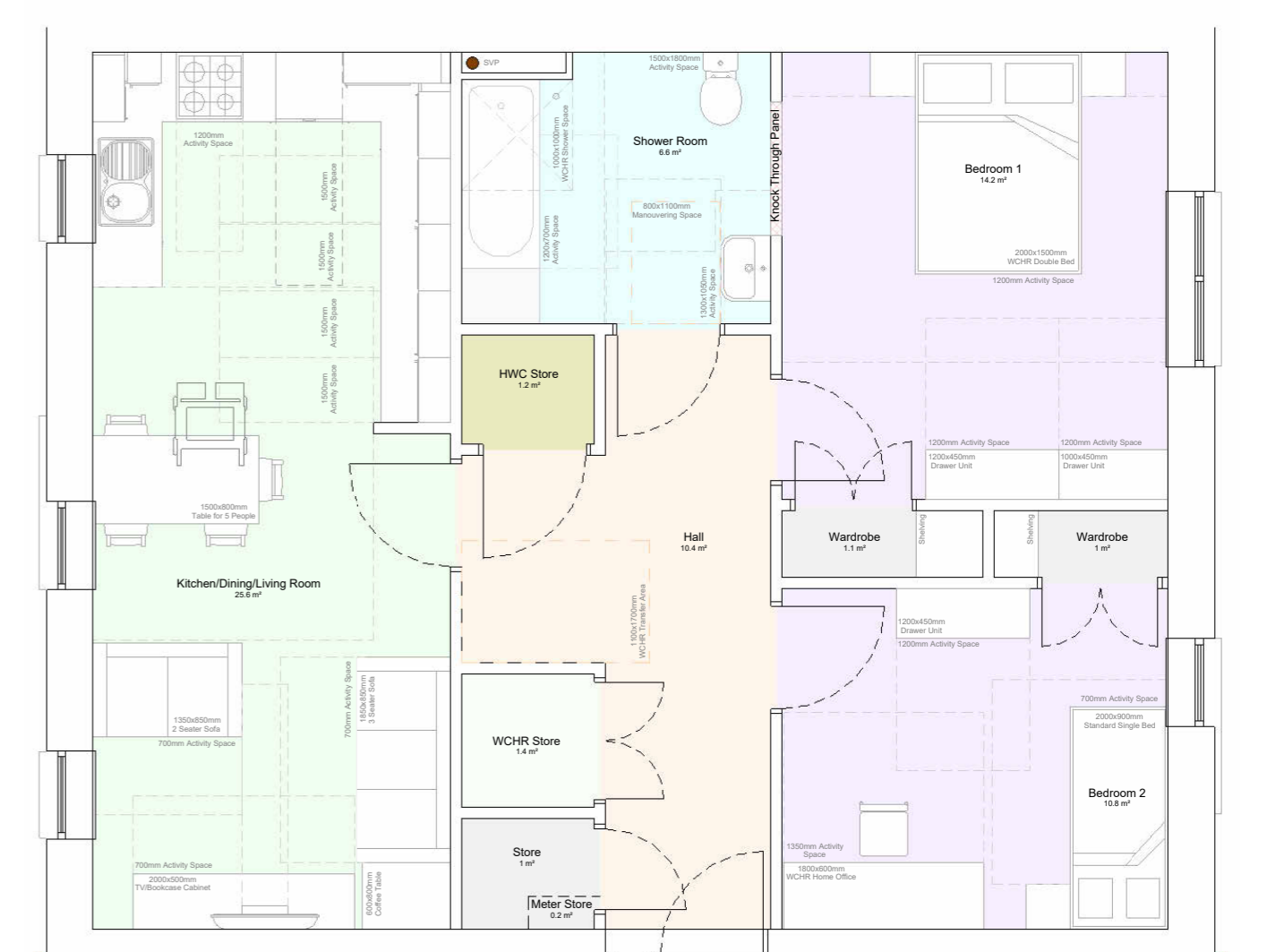
Type CF1
2 Bedroom 4 Person Cottage Flat



Type CF2
2 Bedroom 4 Person Cottage Flat

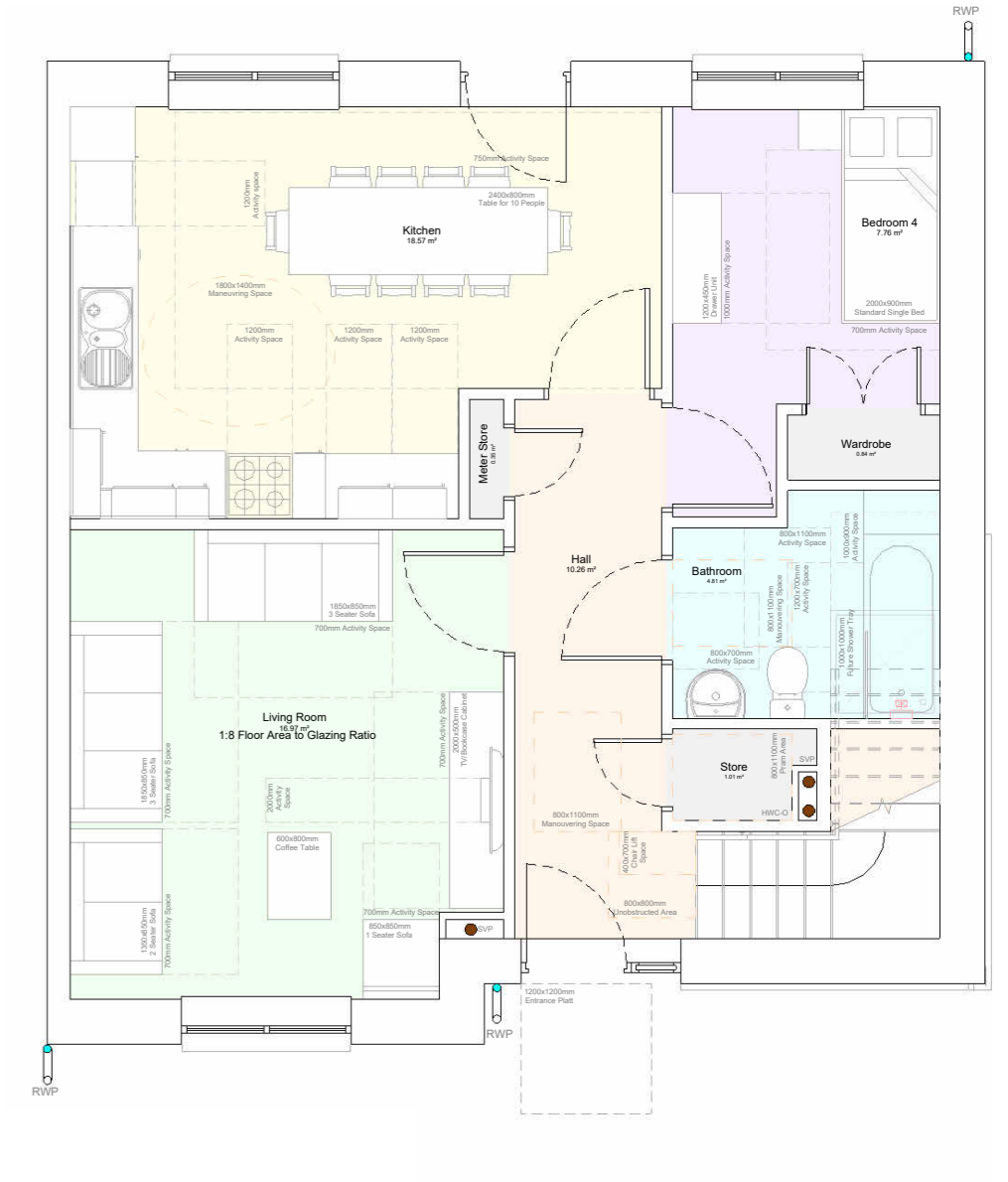
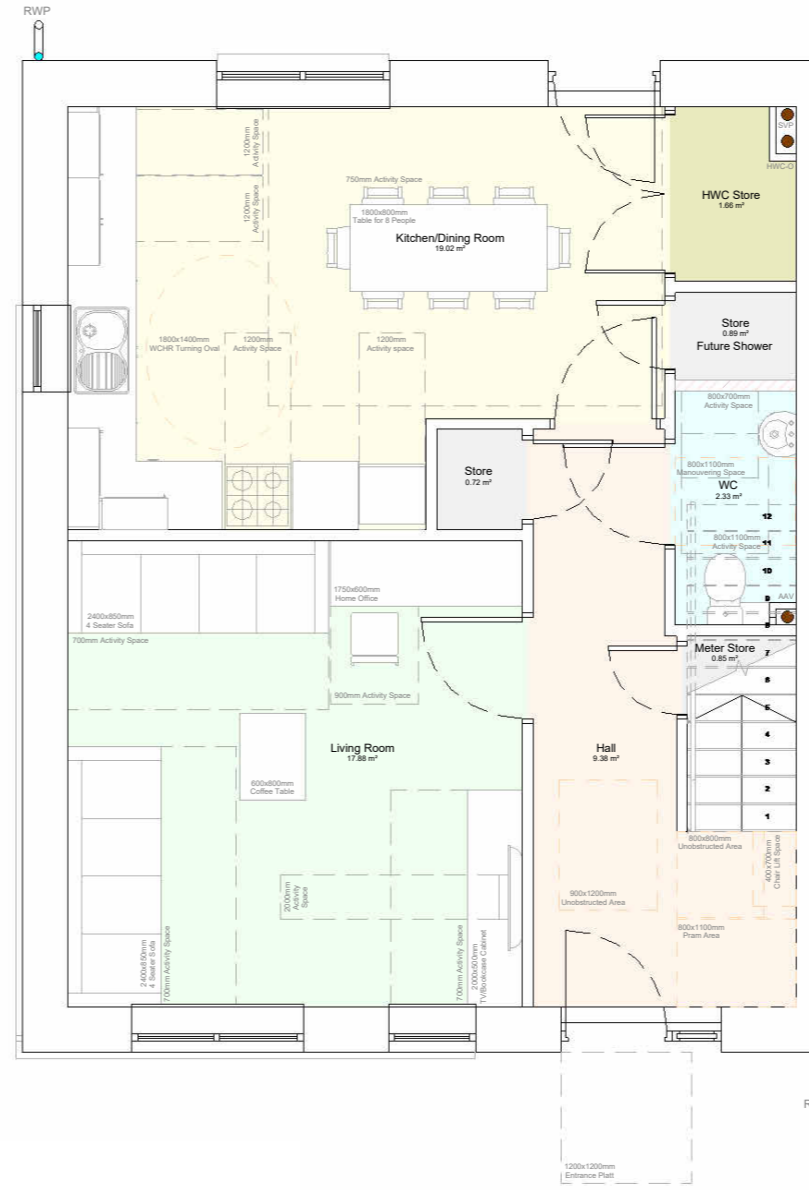
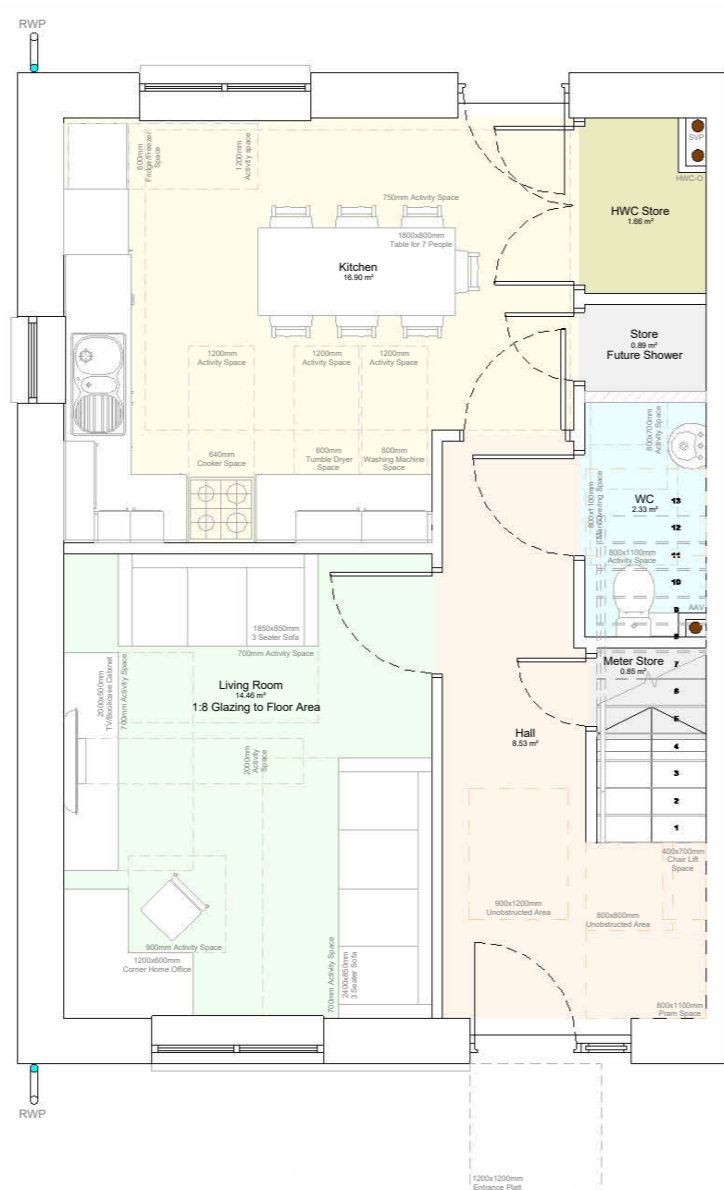
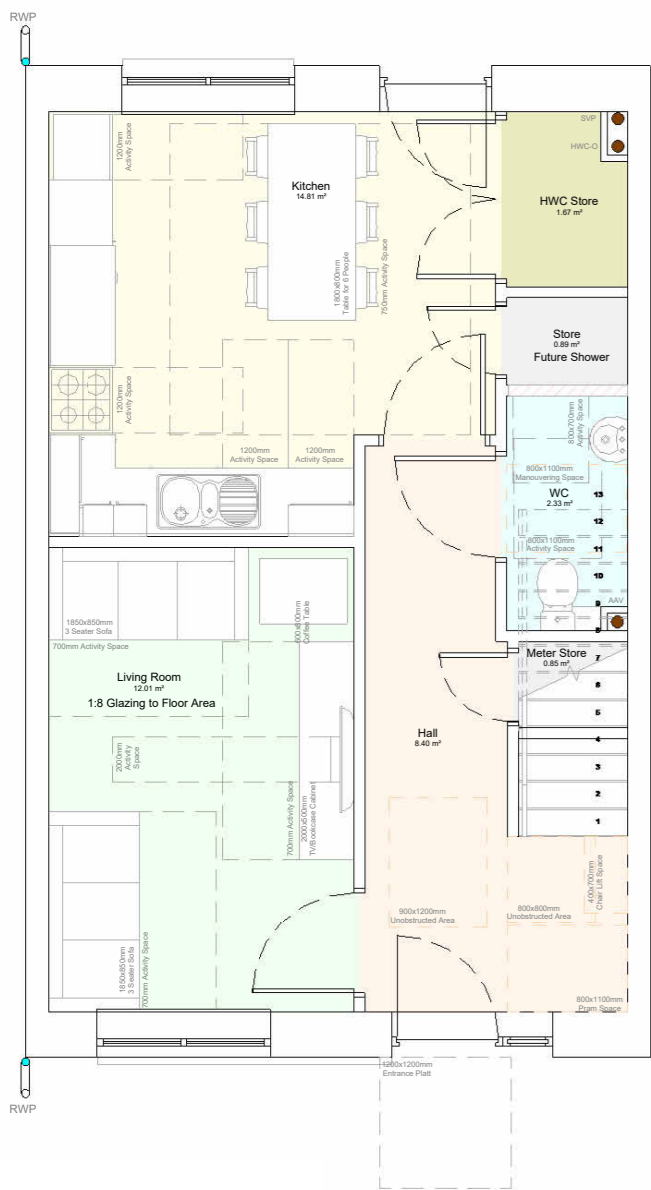
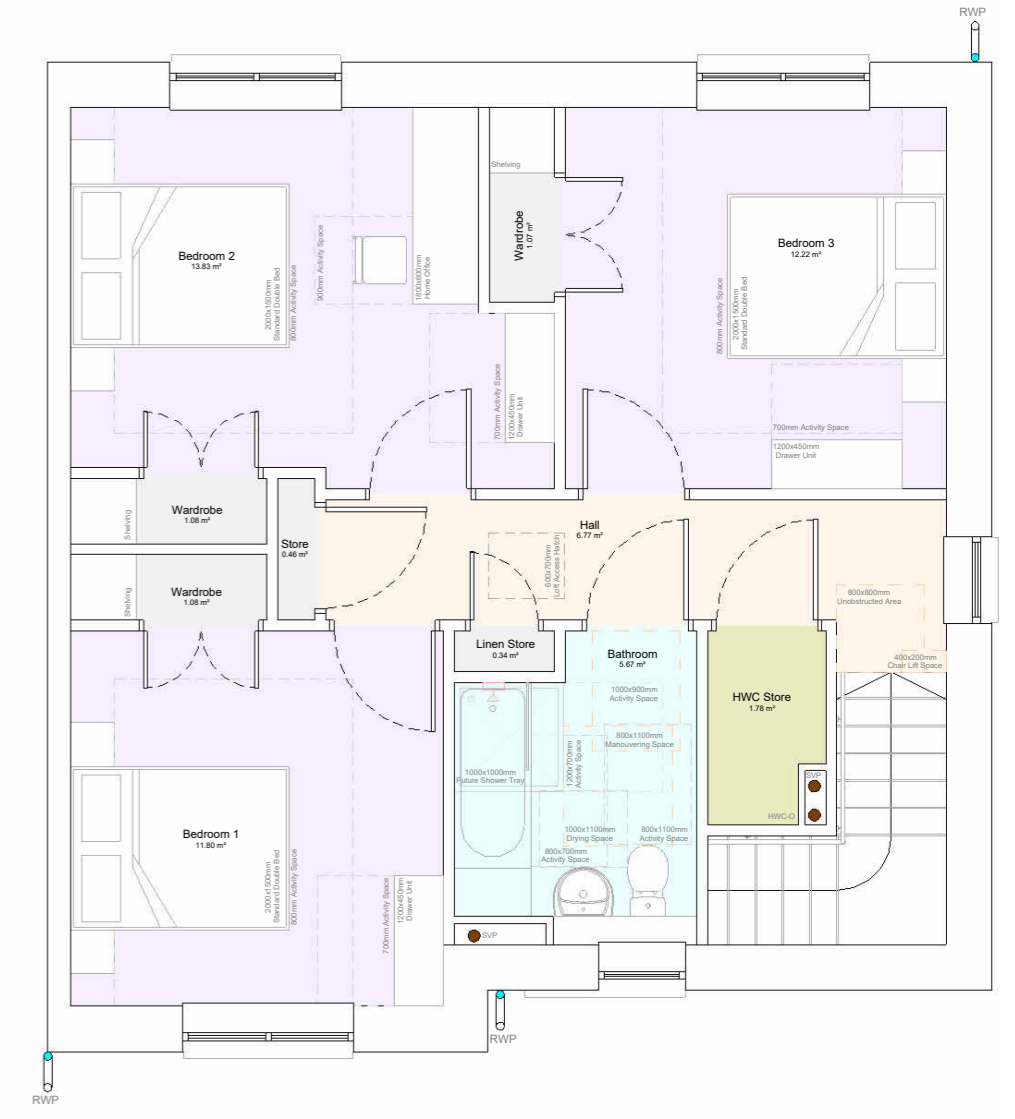
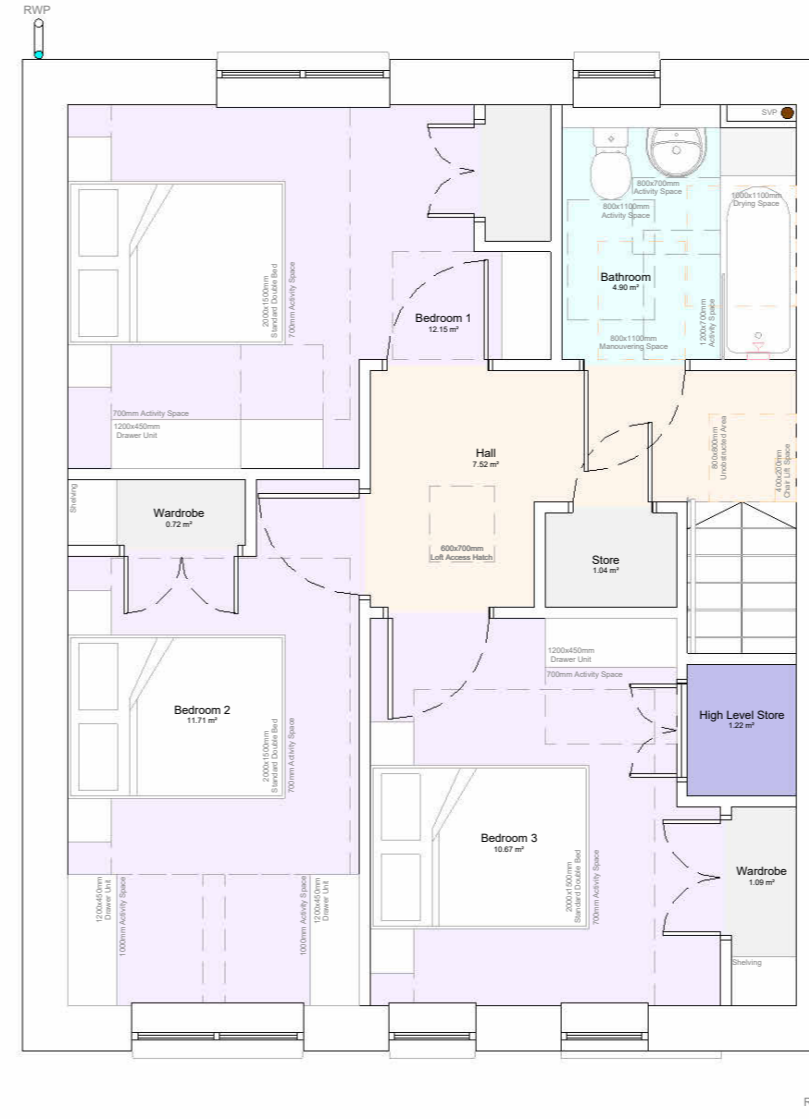
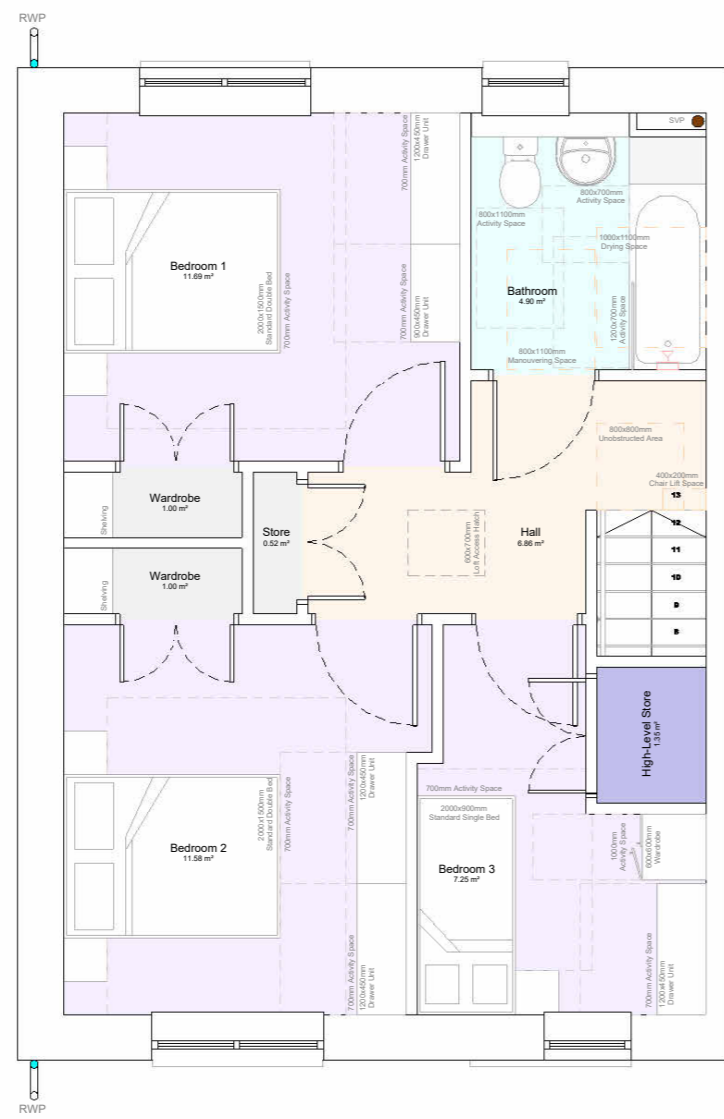
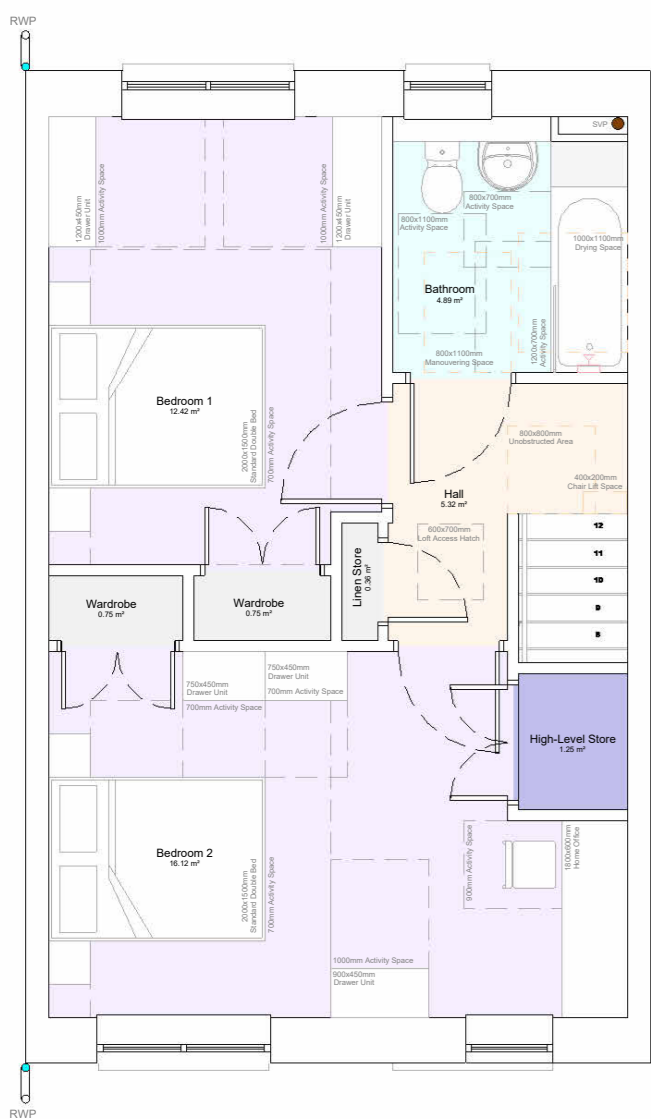


Type CF3
1 Bedroom 2 Person Cottage Flat



Type CF4
2 Bedroom 3 Person WCHR Cottage Flat

House Types



Type H1
2 Bedroom 4 Person House

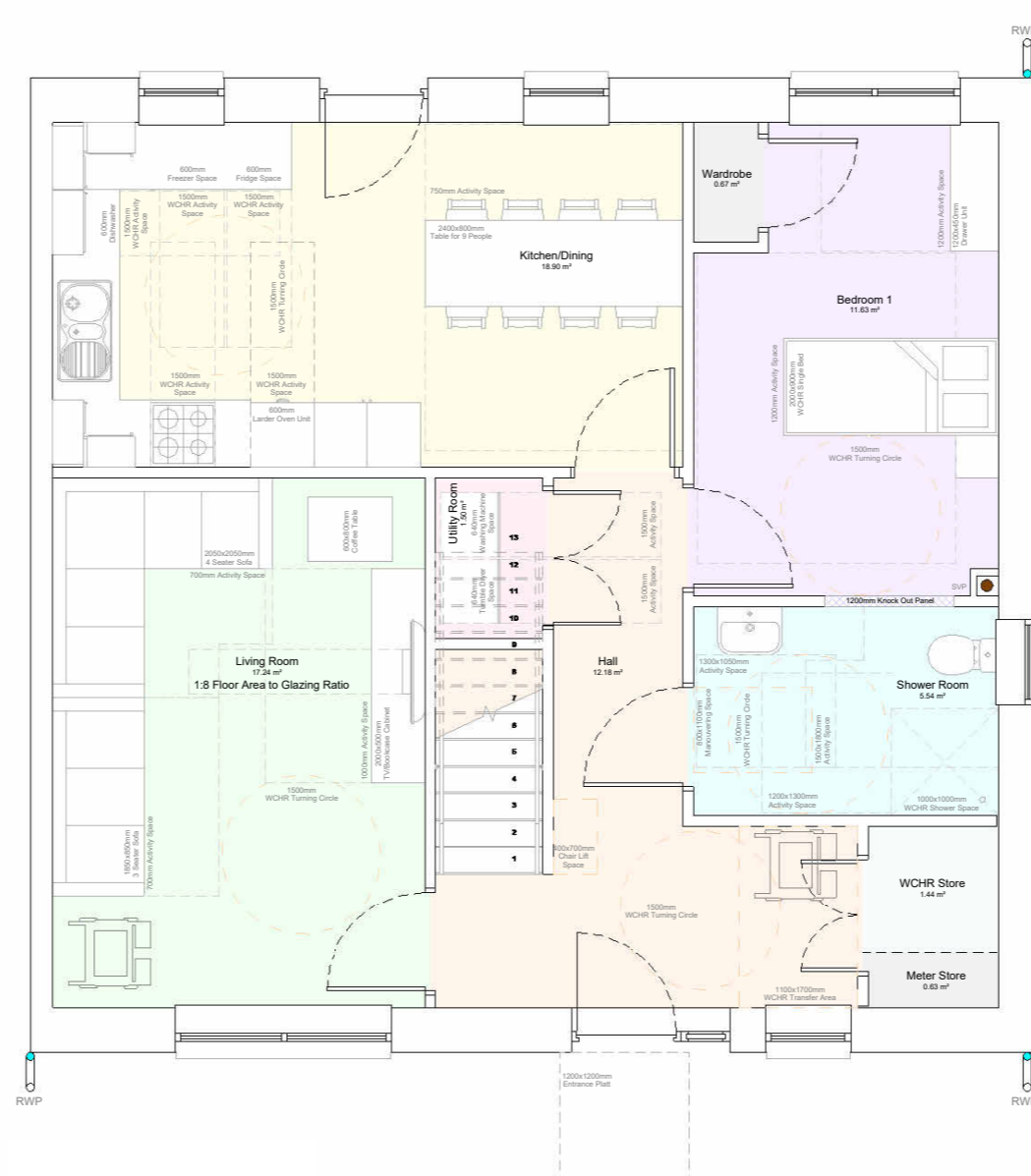
Type H2
3 Bedroom 5 Person House

Type H3
3 Bedroom 6 Person House

Type H4
4 Bedroom 7 Person House

ROOM KEY

- Living Room
- Kitchen
- WC / Bathroom
- Hall
- Bedroom
- Hot Water Cylinder Store
- General Store / Wardrobe



Type H5
3 Bedroom 6 Person WCHR House

