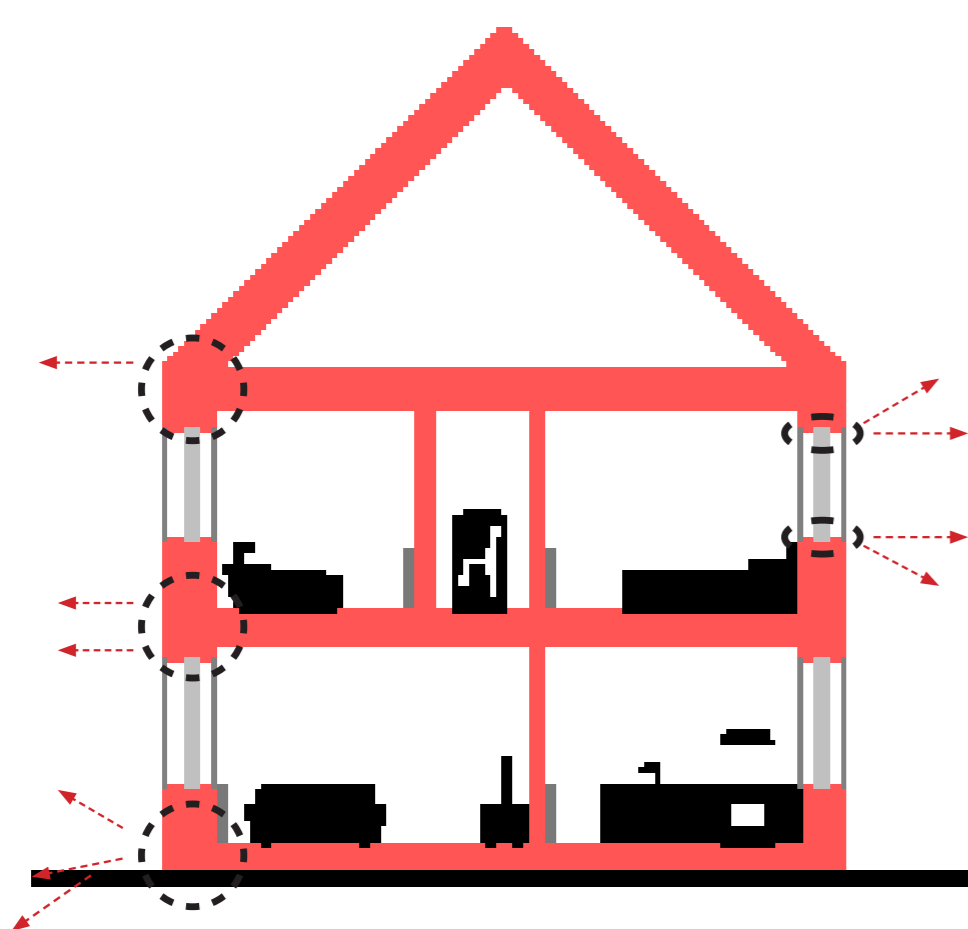


### Garden Design

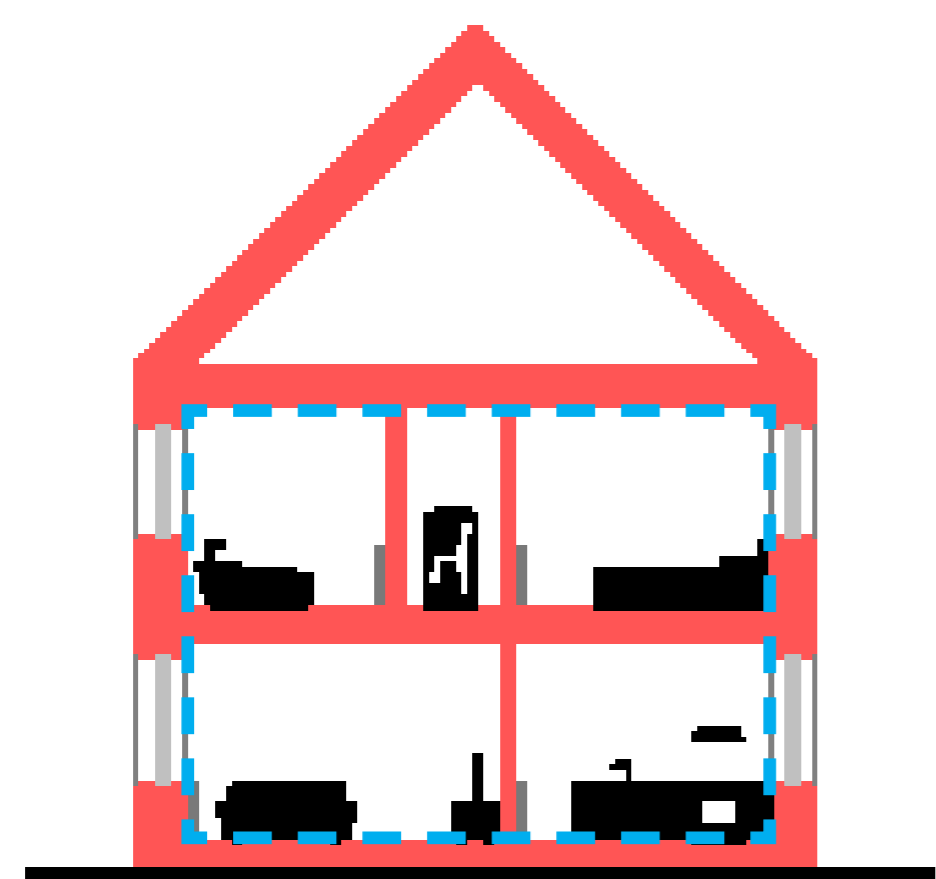
#### Fabric First Approach



Highly Insulated Dwellings

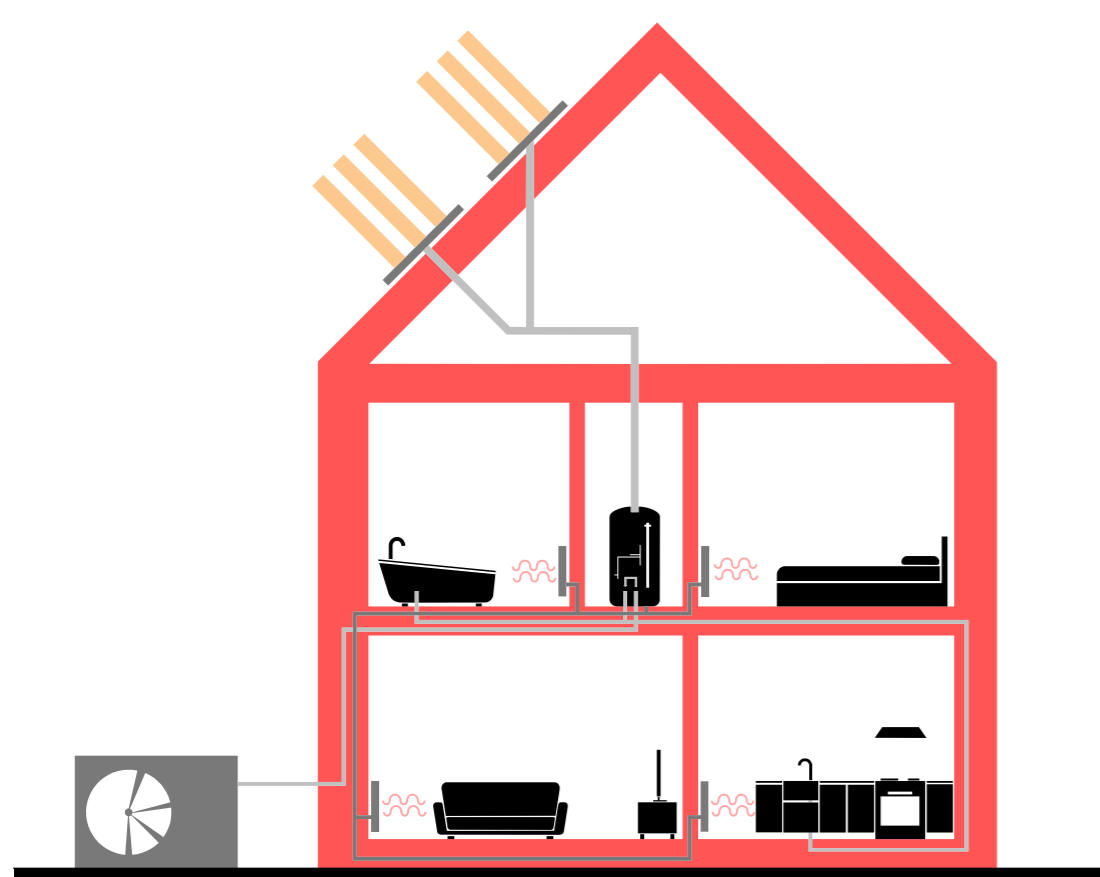


Minimise Thermal Bridging



Build Air Tight

#### Renewables & No Gas Heating



Heat Pumps & PV Panels



#### Mid Terrace Specific

- 6m garden depths (to 1100mm fence line)

#### End Terrace Specific

- 6m-11m garden depths (to 1100mm fence line)

#### General Notes

- 1800mm high timber fence chamfering to 1100mm high timber fence located at gables and sub division of plots.
- 1100mm high timber fence located at garden edge to provide overlooking of parking spaces and communal footpaths to aid in secure by design overlooking policies.
- Car parking, path and bins located in front of fence line to create a usable/unobstructed garden space.
- Bins hidden behind a 1100mm high timber fence, with both trees and planting to aid in screening.
- Barrier free access provided to rear of housing as a result of existing levels to the front of the site.

### Precedent & Materiality

