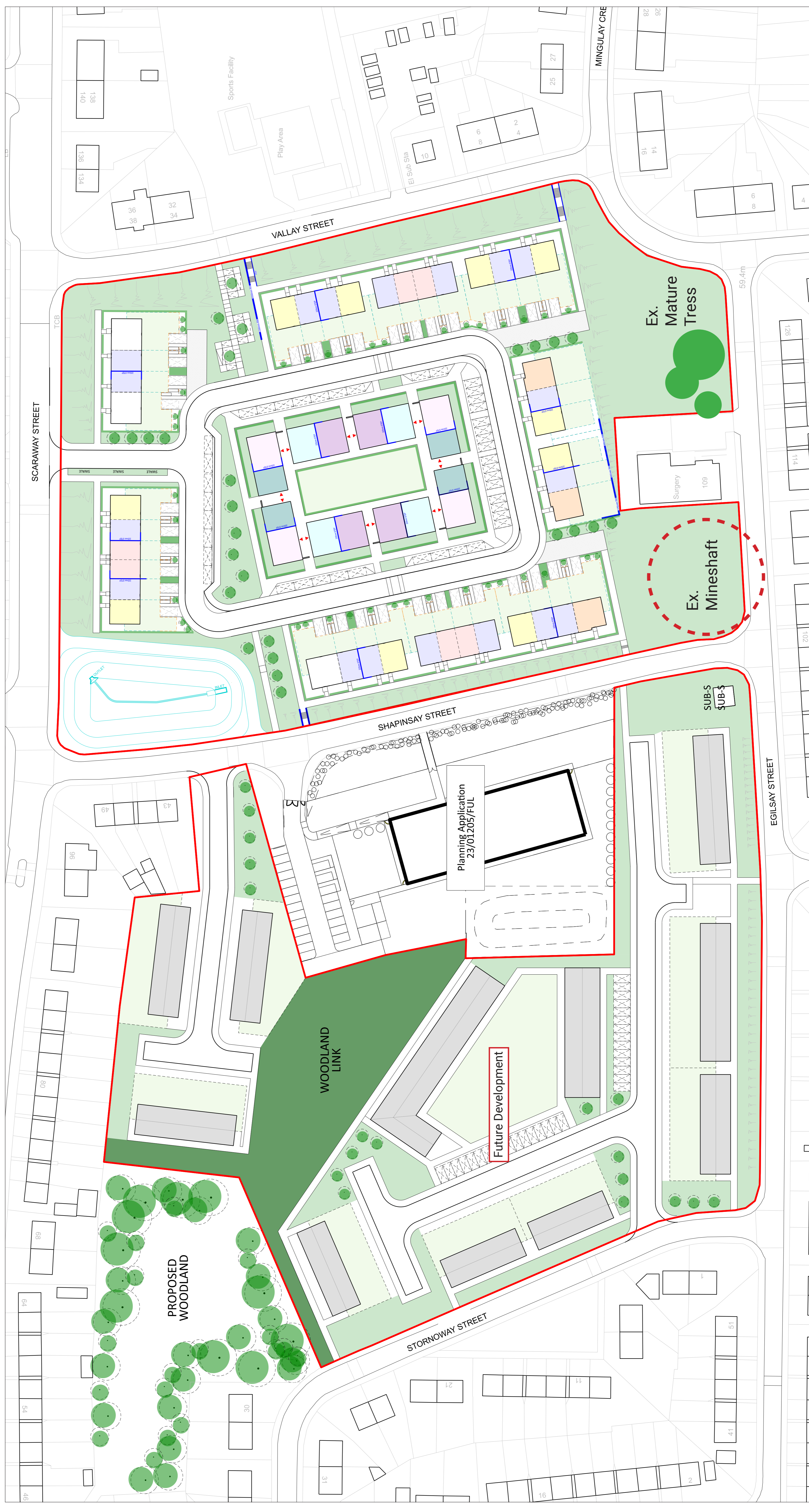


Vallay Street, Milton

Pre-planning Application Public Consultation

01

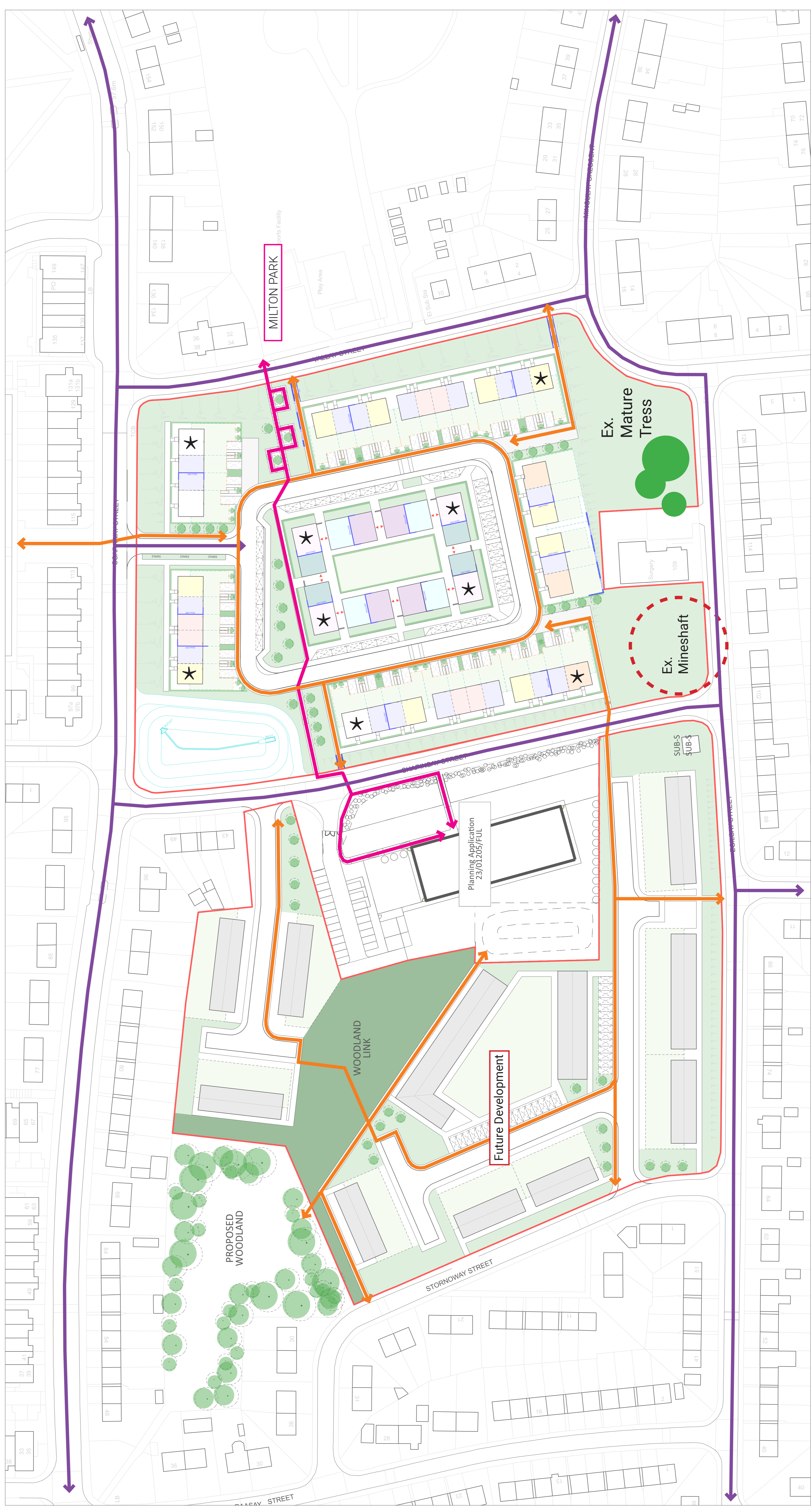


- Type CF1 - 2 Bedroom 4 Person Cottage Flat
- Type CF2 - 2 Bedroom 4 Person Cottage Flat
- Type CF3 - 1 Bedroom 2 Person Cottage Flat
- Type CF4 - 2 Bedroom 3 Person WCHR Cottage Flat
- Type H1 - 2 Bedroom 4 Person House
- Type H2 - 3 Bedroom 5 Person House
- Type H3 - 3 Bedroom 6 Person House
- Type H4 - 4 Bedroom 7 Person House
- Type H5 - 3 Bedroom 6 Person WCHR House

Vallay Street, Milton

Pre-planning Application Public Consultation

02



— Site Boundary

Private / Communal Gardens

Amenity Space

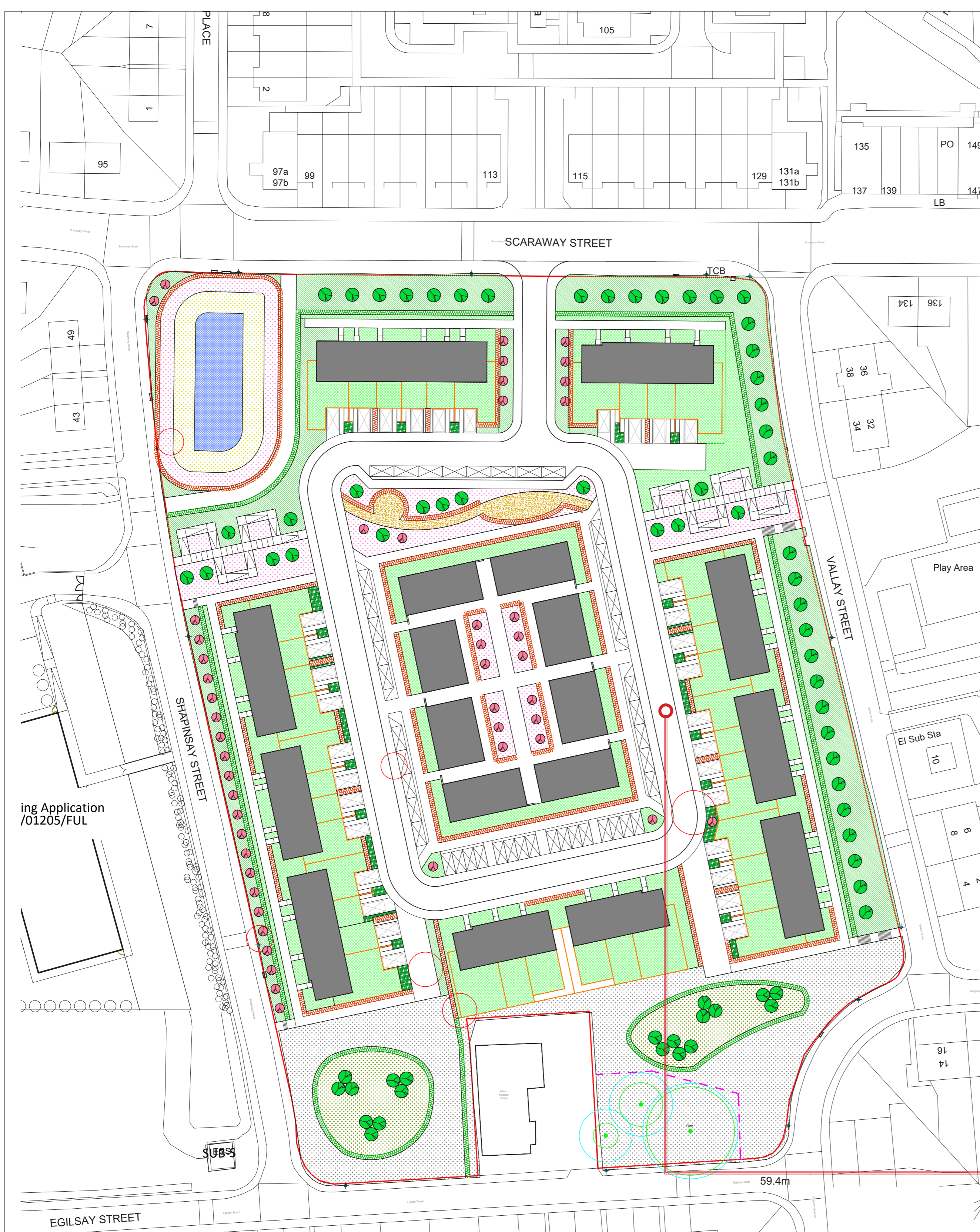
★ Feature Elevations

↔ Vehicular Access to site

↔ Pedestrian link from new hub to existing playground

↔ Pedestrian link through site (connectivity)

Landscaping Proposals



Vallay Street

The proposals retain the mature oak trees to the south boundary adjacent to the medical centre on Egilsay Street. The remaining trees are typically self-seeded. It is not possible to retain any other trees or stands of vegetation within the remainder of the site due to development.

Street trees, both the Small Leaved Lime, *Tilia cordata* 'Greenspire' and Field Maple, *Acer campestre* 'Elegant' are proposed to Scaraway Street and Vallay Street to define the sites north and east boundaries. Here, where the building line is setback from the roadway it is possible to plant trees which at maturity will provide structure to the streets. The tree row is backed by a mixed native species hedge to provide defensible space to the housing, as well as providing a habitat and foraging corridor, and intercepting noise and pollutants.

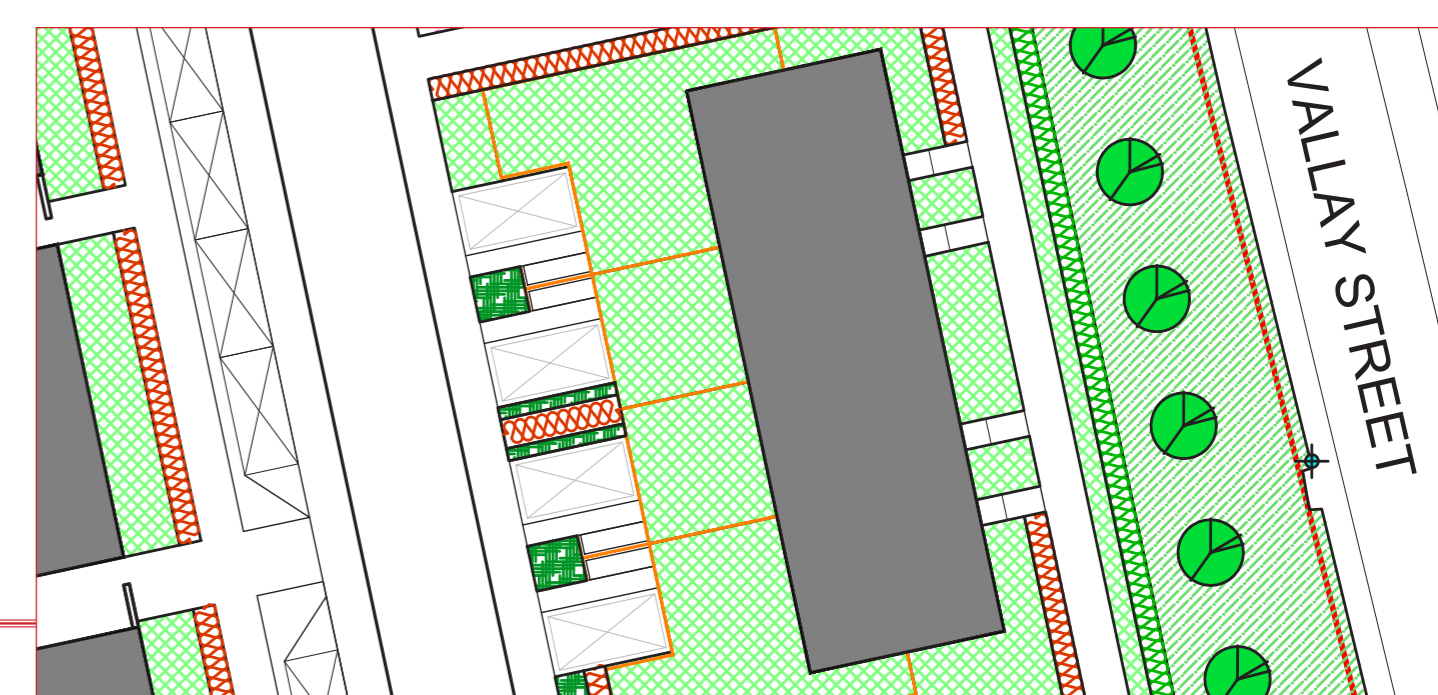
Two woodland blocks are proposed within the existing grassland to the south of the site. These woodland blocks would comprise mixed native tree species with a percentage of pine trees to provide all year-round interest and are enclosed within a mixed native species hedge. The woodland blocks are intended to provide shelter from the prevailing south westerlies. However, the location and size of the woodland blocks is dependent upon the location of former mine shafts.

Ornamental trees are proposed to Shapinsay Street along the site's west boundary. Again, the tree row is backed by a mixed native species hedge to provide defensible space to the housing.

A neighbourhood park Milton Park and play area is located on Vallay Street to the east of the proposed development site, with Scaraway Nursery School to the west. Noting the proposals to build a new community HUB on Shapinsay Street. Therefore, the site layout includes an east west link path to connect the existing and proposed facilities. The central section of the path is located within an amenity space in which items of play along the way equipment are located.

Common Hornbeam hedge lines are proposed within the core of the development site and to property boundaries.

Parking to individual properties will be screened by a combination of hedge lines and shrub beds.



Refer to Board No. 04 for Garden Proposals