

# COMMUNITY & CARE



M  
MAST  
ARCHITECTS



people | place | community



# Our Vision

An outstanding place to work  
Promote creativity  
Inspire people  
Exceed expectations  
Make a difference

# Our Values

People first  
Sustainability  
Creativity  
Quality

## Approach

We are an award winning architectural practice based in Glasgow.

We offer a Director led approach, developing a partnering ethos throughout each and every project, recognising the importance of developing a strong relationship with all parties in order to ensure quality.

We adopt an innovative and pragmatic approach to design working closely with clients to achieve their aims and objectives underpinned by our belief that people, place and community are placed at the heart of what we do.

We believe that all projects are unique and we work to develop sustainable environments with a focus on creating a sense of place.

We aim to make a difference.

## About Us

MAST Architects is one of the largest architectural practices in Scotland, delivering projects across a number of sectors with a particular focus on residential, conservation and community projects, in addition to care, leisure and office developments.

This brochure provides an overview of our community and care projects.

Over the past 40 years our involvement on such projects recognises the need to create places for people to come together - for entertainment and recreation, but also for mutual support. The ability for community projects to enhance health and wellbeing extends into our work in the care sector, where a combination of intensive research, consultation and adherence to best practice guidelines allows for the creation of spaces and buildings which - whether for elderly living, social care, or specialised dementia provision - work to improve the user experience and support the development of sustainable and resilient communities.



## Contact

51 St Vincent Crescent,

Glasgow, G3 8NQ

0141 221 6834

[mast@mastarchitects.co.uk](mailto:mast@mastarchitects.co.uk)

[www.mastarchitects.co.uk](http://www.mastarchitects.co.uk)



listen | explore | create | deliver





**SPACES  
Awards 2018**

Heritage Category  
(Highly Commended)

## KILMARDINNY HOUSE

The Grade-A listed Kilmardinny House in Bearsden has benefitted from various restoration works including internal redecoration and external repairs to windows and stoneworks. A new garden pavilion has been created, connected to the existing building via a glazed link, which provides additional flexibility which enhances the venue as a centre for local arts, performance and community groups.

Community & Care | MAST Architects



**Housing  
Innovation  
Awards 2016**

Most Innovative Supported/  
Sheltered Housing Scheme

**Saltire Society  
Awards 2015**

Innovation in Housing  
(Commendation)

## BELLROCK CLOSE

MAST worked with Scottish Veterans Residences to deliver this innovative transitional support centre for ex-service personnel in Glasgow. The project comprised mainstream flatted accommodation in addition to more bespoke supported provision, the latter housed within a block containing a variety of training and communal spaces. This unique scheme has been recognised at various awards since its completion in 2015.

People. Place. Community. | MAST Architects





## HILLHOUSE ROAD

MAST worked with The JR Group to deliver this retirement living scheme in Hamilton on behalf of Link Group. The scheme provides 29 one- and two-bed units (including two fully accessible units for wheelchair users) together with communal facilities on a prominent site to the west of the town centre. Accommodation is contained within a single three-storey block, wrapped around landscaped courtyard spaces.

Community & Care | MAST Architects



Inside Housing  
Development Awards  
2019

Best Partnership  
(Council or NHS)

Shortlisted

## CESSNOCK ROAD

This scheme in the East Ayrshire town of Hurlford provides 14 no. one-bed supported flatted dwellings for East Ayrshire Council, contained within a single block which also includes office and staff spaces. The building is configured around a landscaped resident's garden, with extensive glazing to circulation areas to maximise views to this attractive communal space.

People. Place. Community. | MAST Architects





## CALTON HERITAGE & LEARNING CENTRE

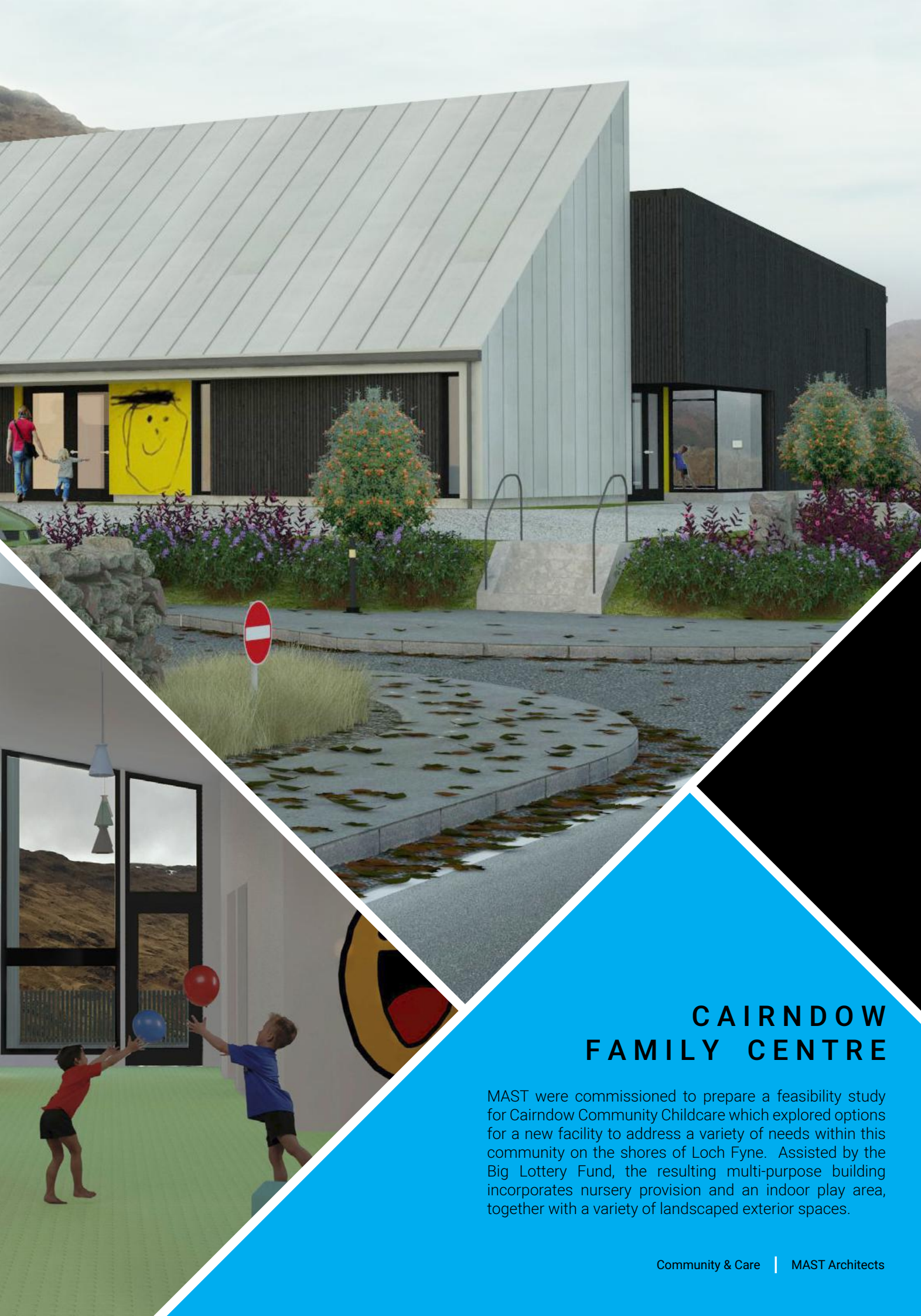
This new-build project was completed on behalf of Thenue Housing Association and the Calton Area Association, supported by the Big Lottery Fund. The centre provides a new sub-dividable community hall in the east end of Glasgow, together with a kitchen and office space. The interior includes specially commissioned artwork which commemorates the workers of the nearby Templeton's Carpet Factory.



## ROYSTONHILL COMMUNITY HUB

The redevelopment of the former Rainbow Hall comprises the insertion of a new community building behind a retained historic facade, with reconfiguration of the adjacent Spire Park to enhance views of the A-listed Royston Spire. The new facility caters for a variety of uses, incorporating a rentable social enterprise space and office accommodation in addition to a multipurpose hall with a demountable stage.





## CAIRNDOW FAMILY CENTRE

MAST were commissioned to prepare a feasibility study for Cairndow Community Childcare which explored options for a new facility to address a variety of needs within this community on the shores of Loch Fyne. Assisted by the Big Lottery Fund, the resulting multi-purpose building incorporates nursery provision and an indoor play area, together with a variety of landscaped exterior spaces.

Community & Care | MAST Architects



## NETHERHOLM COMMUNITY HALL

Forming part of a larger regeneration scheme in the Castlemilk area of Glasgow, this project was borne out of extensive consultation to combine residential uses and community facilities on a single site. The latter adopts a 'loose fit' approach to cater for a variety of potential functions, in addition to more specialised media rooms and I.T. training facilities. A direct connection with a private rear garden will allow the hall to be used as a day nursery in the future.

People. Place. Community. | MAST Architects





## REVIVE MS SUPPORT

MAST led on the fit-out of an existing office pavilion in Glasgow's Govan area to provide a new headquarters for Revive MS Support, a multiple sclerosis charity. Working within the confines of the existing building, the facility provides a variety of therapy and communal spaces, including a gym and cafe for service users. The building also accommodates a hyperbaric oxygen chamber, a key component of the client's therapy services.

Community & Care | MAST Architects



## FIRHILL SPORTS

Firhill Community Trust operates the Firhill Complex, a football and sport facility in Glasgow. MAST were appointed to carry out an options appraisal to examine the Trust's current facilities and consider development outcomes to determine which might be most appropriate to safeguard the facility's future use.

People. Place. Community. | MAST Architects





## ROSEHALL MANOR

MAST were commissioned by Third Life Care Ltd. to carry out a refurbishment and extension of the existing Rosehall Manor Care Home in Shotts. The new-build element consisted of 23 new bedrooms and communal facilities, with the original 17-bed home being fully renovated. MAST worked closely with the Care Inspectorate to ensure that the resulting building was fully compliant with the relevant legislation.



## ERSKINE ASSISTED LIVING

MAST have undertaken a number of projects on behalf of the Erskine Armed Forces Charity at their estate in Renfrewshire. This project saw the creation of an additional five supported units in a new block which linked the Park Home with Ramsay House, each unit incorporating individual kitchen and shower rooms as well as access to landscaped external gardens.





## ERSKINE PARK HOME

This project comprised the enlargement of an existing day room and the creation of a new sun room, to provide new communal space for residents of Erskine's Park Home. The build was configured to ensure that the existing day room could continue to be used for as long as possible, ensuring minimal disruption for staff and residents.



## ERSKINE SUNROOMS

Two existing sitting rooms and tea preparation areas were extended to provide new dining and lounge areas, within the Park Home's Red Cross House and Yarrow House wings. Works included the creation of a new roof terrace, enhancing the amenity of an existing first floor sitting room.





## ERSKINE GLASGOW HOME

A single-storey extension was created for Erskine's Glasgow home, providing a new recreational hall for the home's residents. The new building infilled an existing courtyard, with a new bi-folding screen providing access to a renewed garden area externally. New audio-visual equipment and feature lighting was installed to allow the space to be used for a variety of communal activities.

Community & Care | MAST Architects

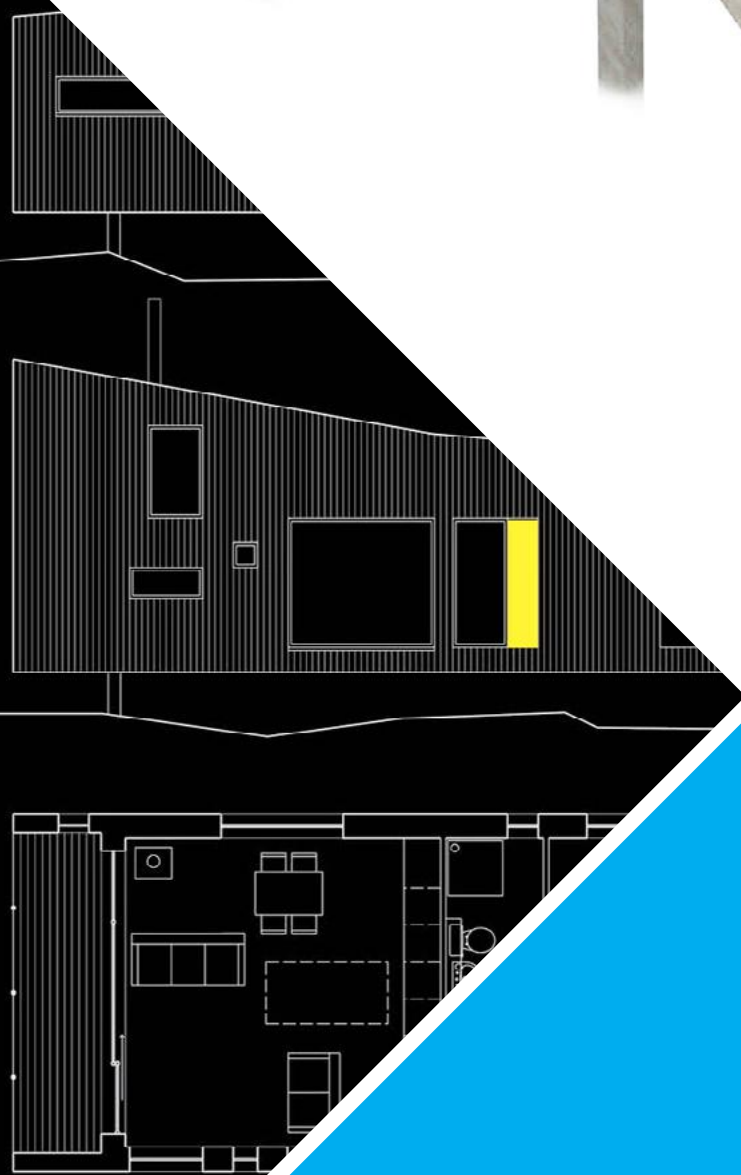
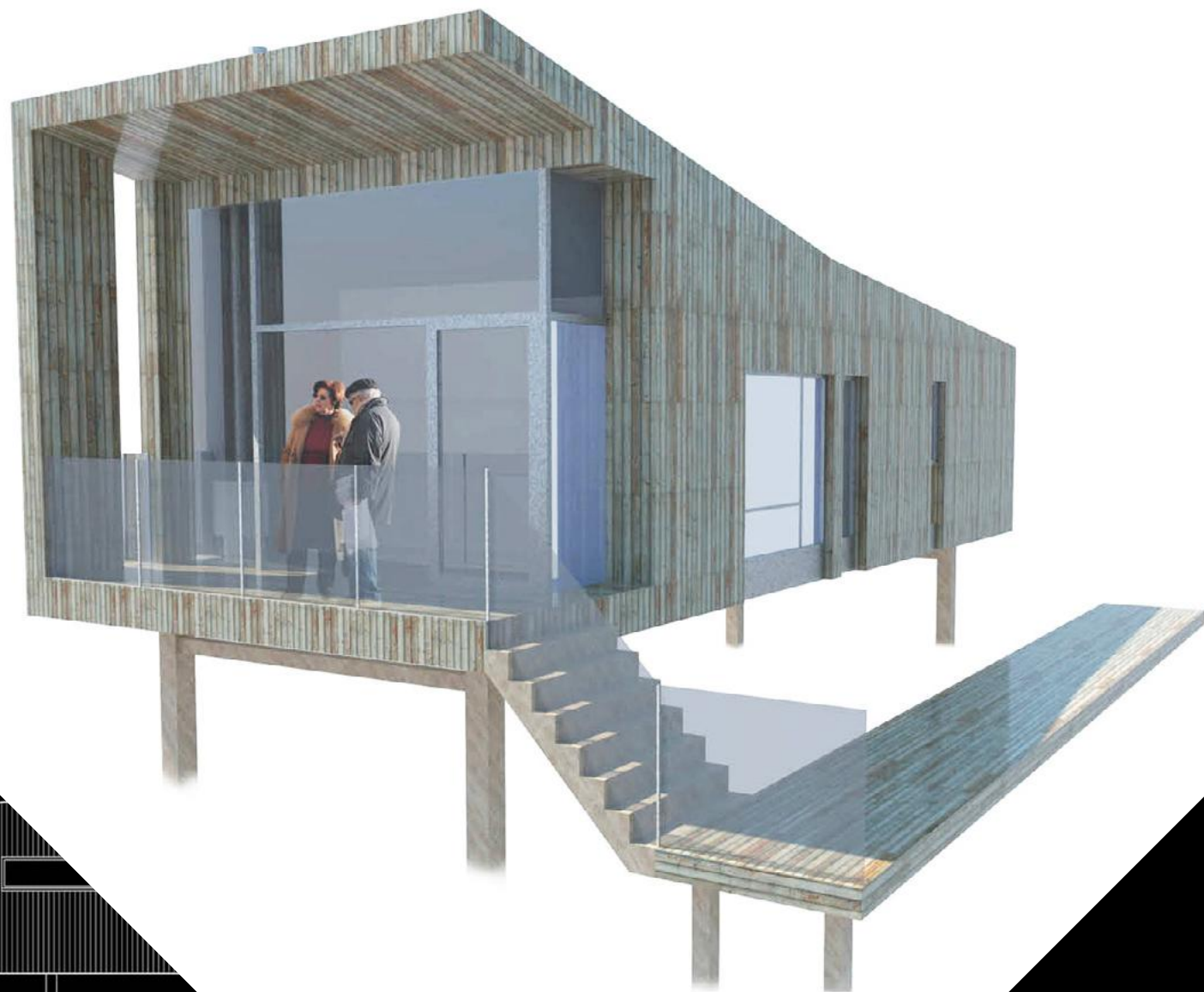


## BRIDGETON COMMUNITY LEARNING CAMPUS

Local groups, working with East End Social Inclusion Partnership and Glasgow City Council, commissioned a feasibility study to investigate options for a replacement community facility in Bridgeton. This led to a proposal which comprises a variety of flexible multipurpose spaces in addition to office and training rooms. The initial study was delivered by others following a successful application for European funding.

People. Place. Community. | MAST Architects





## GLENTRESS LODGES

Our proposals for this competitive selection process investigated a masterplan for Glentress Tweed Valley Forest Park, developing the resort to generate increased economic activity; optimising the forest's resources for visitor and tourism purposes. This approach comprised elements of masterplanning, conceptual design, community engagement and planning liaison. The competition was promoted by the Forestry Commission.

Community & Care | MAST Architects



## NHS WARD REFURBISHMENTS

MAST worked with NHS Greater Glasgow and Clyde on a programme of works at Gartnavel General and Dykebar Hospitals. The Gartnavel project saw the upgrade of a facility for eye patients, working closely with healthcare staff, whilst Dykebar provided a variety of new facilities for 24 elderly dementia patients. Proposals for the latter were informed by research undertaken by the Dementia Services Development Centre at Stirling University.

People. Place. Community. | MAST Architects

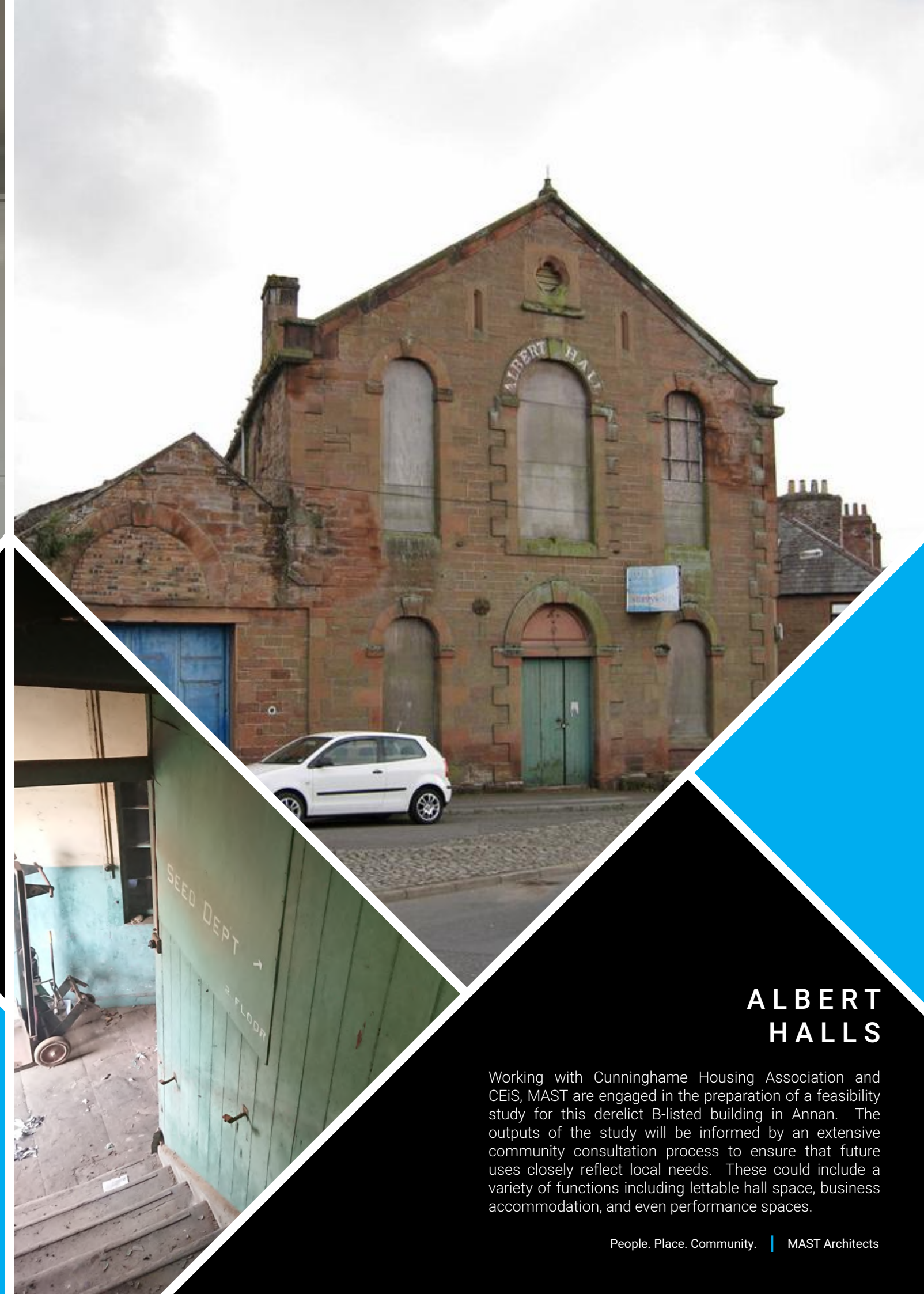




## CHILDREN'S CARE HOMES

MAST have successfully delivered a number of children's residential care units across Glasgow for various clients, including GCC Social Work. Typically incorporated within larger residential developments, these facilities require close dialogue with the end user to develop robust briefs, as well as careful consideration of design and specification features to ensure proposals are compliant with all necessary legislation.

Community & Care | MAST Architects



## ALBERT HALLS

Working with Cunninghame Housing Association and CEIS, MAST are engaged in the preparation of a feasibility study for this derelict B-listed building in Annan. The outputs of the study will be informed by an extensive community consultation process to ensure that future uses closely reflect local needs. These could include a variety of functions including lettable hall space, business accommodation, and even performance spaces.

People. Place. Community. | MAST Architects





## KIRKINTILLOCH TOWN HALL

Kirkintilloch Town Hall in East Dunbartonshire is an important local landmark, which required extensive repairs to its built fabric. MAST were tasked with preparing a series of options to inform this process, as well as developing a proposal for a contemporary extension comprising lettable space and 'front of house' facilities to support the Town Hall's historic role as a performance venue.



## FARE FACILITY

MAST collaborated with Family Action in Rogerfield and Easterhouse (FARE) to investigate options for a new build community facility. This exciting multi-functional space was to be used by a variety of local youth groups, allowing for more concentrated outreach programmes to be introduced within the local area. The resulting building was part funded by a local entrepreneur, based upon MAST's initial proposals.



# Awards

2019 **Inside Housing Development Awards**  
Best Partnership (NHS or Council)  
Shortlisted

Cessnock Road  
CCG (Scotland) Ltd./East Ayrshire Council

2018 **SPACES Awards**  
Heritage Award (Commendation)

Kilmardinny House  
East Dunbartonshire Council/Hub West

2017 **Herald Property Awards**  
Commercial Project of the Year  
Shortlisted

Kilmardinny House  
East Dunbartonshire Council/Hub West

2016 **Housing Innovation Awards**  
Most Innovative Supported/Sheltered  
Housing Scheme

Bellrock Close  
Scottish Veterans Residences

2015 **Saltire Housing Awards**  
Innovation in Housing (Commendation)

Bellrock Close  
Scottish Veterans Residences



# Our Clients





# Frameworks

In addition to our continued work with various lpublic and private sector clients, we have also been appointed to a number of procurement frameworks, covering a number of geographical areas across Scotland.



Our appointment to the Scottish Procurement Alliance (SPA) Housing Consultancy Workstream 1 framework has seen us placed **first** in three geographical lots covering Eastern, West Central and Southern Scotland.

Our success in this process allows clients to award projects on a direct call-off basis without the need for a tender exercise, with eligible projects across a wide variety of building types including residential schemes, student accommodation, offices, education buildings, sports facilities and community buildings.

# Our Senior Management Team

**David Denholm**  
Director  
[david@mastarchitects.co.uk](mailto:david@mastarchitects.co.uk)



**Michael Jarvis**  
Director  
[michael@mastarchitects.co.uk](mailto:michael@mastarchitects.co.uk)



**Mark Johnstone**  
Director  
[mark@mastarchitects.co.uk](mailto:mark@mastarchitects.co.uk)



**Gordon Bain**  
Project Director  
[gordon@mastarchitects.co.uk](mailto:gordon@mastarchitects.co.uk)



**Ryan Cossar**  
Project Director  
[ryan@mastarchitects.co.uk](mailto:ryan@mastarchitects.co.uk)



**Alan Gordon**  
Project Director  
[alan@mastarchitects.co.uk](mailto:alan@mastarchitects.co.uk)



people | place | community





listen | explore | create | deliver